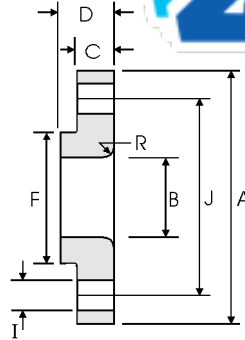


ZIZI ENGINEERING CO LTD

Lap Joint Flanges - ANSI B16.5



Class 150 lb

Nominal Pipe Size	Pipe	Flange Data					Lap	Hub	Drilling Data			Weight
		A	B	C	D	R	F	H	I	J		
	Outside Diameter	Overall Diameter	Inside Diameter	Flange Thickness min	Overall Length	Lap Radius	Hub Diameter	Number of Holes	Bolt Hole Diameter	Diameter of Circle of Holes	kg/ piece	
in mm	in mm	in mm	in mm	in mm	in mm	in mm	in mm		in mm	in mm		
1/2	0.840	3.500	0.900	0.440	0.620	0.120	1.190	4	0.620	2.380	0.38	
	21.30	88.90	22.90	11.20	15.70	3.000	30.20		15.70	60.45		
3/4	1.050	3.880	1.110	0.500	0.620	0.120	1.500	4	0.620	2.750	0.55	
	26.70	98.60	28.20	12.70	15.70	3.000	38.10		15.70	69.85		
1	1.315	4.250	1.380	0.560	0.690	0.120	1.940	4	0.620	3.120	0.76	
	33.40	108.0	35.10	14.20	17.50	3.000	49.30		15.70	79.25		
1 1/4	1.660	4.620	1.720	0.620	0.810	0.190	2.310	4	0.620	3.500	1.01	
	42.20	117.3	43.70	15.70	20.60	4.800	58.70		15.70	88.90		
1 1/2	1.900	5.000	1.970	0.690	0.880	0.250	2.560	4	0.620	3.880	1.30	
	48.30	127.0	50.00	17.50	22.40	6.400	65.00		15.70	98.60		
2	2.375	6.000	2.460	0.750	1.000	0.310	3.060	4	0.750	4.750	2.03	
	60.30	152.4	62.50	19.10	25.40	7.900	77.70		19.10	120.7		
2 1/2	2.875	7.000	2.970	0.880	1.120	0.310	3.560	4	0.750	5.500	3.25	
	73.00	177.8	75.40	22.40	28.40	7.900	90.40		19.10	139.7		
3	3.500	7.500	3.600	0.940	1.190	0.380	4.250	4	0.750	6.000	3.81	
	88.90	190.5	91.40	23.90	30.20	9.700	108.0		19.10	152.4		
3 1/2	4.000	8.500	4.100	0.940	1.250	0.380	4.810	8	0.750	7.000	4.76	
	101.6	215.9	104.1	23.90	31.75	9.700	122.2		19.10	177.8		
4	4.500	9.000	4.600	0.940	1.310	0.440	5.310	8	0.750	7.500	5.25	
	114.3	228.6	116.8	23.90	33.30	11.20	134.9		19.10	190.5		
5	5.563	10.00	5.690	0.940	1.440	0.440	6.440	8	0.880	8.500	6.02	
	141.3	254.0	114.5	23.90	36.60	11.20	163.6		22.40	215.9		
6	6.625	11.00	6.750	1.000	1.560	0.500	7.560	8	0.880	9.500	7.40	
	168.3	279.4	171.5	25.40	39.60	12.70	192.0		22.40	241.3		
8	8.625	13.50	8.750	1.120	1.750	0.500	9.690	8	0.880	11.75	12.1	
	219.1	342.9	222.3	28.40	44.50	12.70	246.1		22.40	298.5		
10	10.75	16.00	10.92	1.190	1.940	0.500	12.00	12	1.000	14.25	16.4	
	273.0	406.4	277.4	30.20	49.30	12.70	304.8		25.40	362.0		
12	12.75	19.00	12.92	1.250	2.190	0.500	14.38	12	1.000	17.00	26.1	
	323.8	482.6	328.2	31.75	55.60	12.70	365.3		25.40	431.8		
14	14.00	21.00	14.18	1.380	3.120	0.500	15.75	12	1.120	18.75	34.5	
	355.6	533.4	360.2	35.10	79.25	12.70	400.1		28.40	476.3		
16	16.00	23.50	16.19	1.440	3.440	0.500	18.00	16	1.120	21.25	44.6	
	406.4	596.9	411.2	36.60	87.40	12.70	457.2		28.40	539.8		
18	18.00	25.00	18.20	1.560	3.810	0.500	19.88	16	1.250	22.75	48.7	
	457.2	635.0	462.3	39.60	96.80	12.70	505.0		31.75	577.9		
20	20.00	27.50	20.25	1.690	4.060	0.500	22.00	20	1.250	25.00	61.6	
	508.0	698.5	514.4	42.90	103.1	12.70	558.8		31.75	635.0		
24	24.00	32.00	24.25	1.880	4.380	0.500	26.12	20	1.380	29.50	86.6	
	609.6	812.8	616.0	47.80	111.3	12.70	663.4		35.10	749.3		

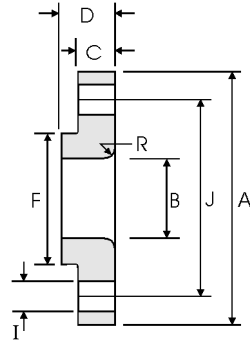
Notes

- Weights are based on manufacturer's data and are approximate.

ZIZI ENGINEERING CO LTD



Lap Joint Flanges - ANSI B16.5



Class 300 lb

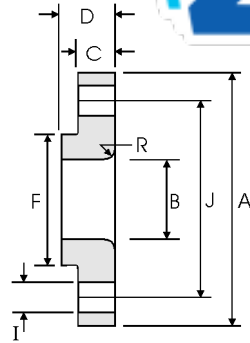
Nominal Pipe Size	Pipe		Flange Data					Lap	Hub	Drilling Data			Weight
			A	B	C	D	R	F	H	I	J		
	Outside Diameter	Overall Diameter	Inside Diameter	Flange Thickness min	Overall Length	Lap Radius	Hub Diameter	Number of Holes	Bolt Hole Diameter	Diameter of Circle of Holes	kg/ piece		
in mm	in mm	in mm	in mm	in mm	in mm	in mm	in mm					in mm	in mm
1/2	0.840 21.30	3.750 95.20	0.900 22.90	0.560 14.20	0.880 22.30	0.120 3.000	1.500 38.10	4	0.620 15.70	2.620 66.55	0.62		
3/4	1.050 26.70	4.620 117.3	1.110 28.20	0.620 15.70	1.000 25.40	0.120 3.000	1.880 47.70	4	0.750 19.00	3.250 82.50	1.10		
1	1.315 33.40	4.880 123.9	1.380 35.10	0.690 17.50	1.060 26.90	0.120 3.000	2.120 53.80	4	0.750 19.0	3.500 88.90	1.33		
1 1/4	1.660 42.20	5.250 133.3	1.720 43.70	0.750 19.00	1.060 26.90	0.190 4.800	2.500 63.50	4	0.750 19.00	3.880 98.50	1.65		
1 1/2	1.900 48.30	6.120 155.4	1.970 50.00	0.810 20.60	1.190 30.20	0.250 6.400	2.750 69.85	4	0.880 22.30	4.500 114.3	2.44		
2	2.375 60.30	6.500 165.1	2.460 62.50	0.880 22.30	1.310 33.20	0.310 7.900	3.310 84.00	8	0.750 19.10	5.000 127.0	2.83		
2 1/2	2.875 73.00	7.500 190.5	2.970 75.40	1.000 25.40	1.500 38.10	0.310 7.900	3.940 100.0	8	0.880 22.30	5.880 149.3	4.25		
3	3.500 88.90	8.250 209.5	3.600 91.40	1.120 28.40	1.690 42.90	0.380 9.700	4.620 117.3	8	0.880 22.30	6.620 168.1	5.78		
3 1/2	4.000 101.6	9.000 228.6	4.100 104.1	1.190 30.20	1.750 44.40	0.380 9.700	5.250 133.3	8	0.880 22.30	7.250 184.1	7.27		
4	4.500 114.3	10.00 254.0	4.600 116.8	1.250 31.70	1.880 47.70	0.440 11.20	5.750 146.0	8	0.880 22.30	7.880 200.1	9.55		
5	5.563 141.3	11.00 279.4	5.690 114.5	1.380 35.00	2.000 50.80	0.440 11.20	7.000 177.8	8	0.880 22.30	9.250 234.9	12.2		
6	6.625 168.3	12.50 317.5	6.750 171.5	1.440 36.50	2.060 52.30	0.500 12.70	8.120 206.2	12	0.880 22.30	10.62 269.7	15.5		
8	8.625 219.1	15.00 381.0	8.750 222.3	1.620 41.10	2.440 61.90	0.500 12.70	10.25 260.3	12	1.000 25.40	13.00 330.2	24.1		
10	10.75 273.0	17.50 444.5	10.92 277.4	1.880 47.70	3.750 95.20	0.500 12.70	12.62 320.5	16	1.120 28.40	15.25 387.3	34.4		
12	12.75 323.8	20.50 520.7	12.92 328.2	2.000 50.80	4.000 101.6	0.500 12.70	14.75 374.6	16	1.250 31.70	17.75 450.8	50.4		
14	14.00 355.6	23.00 584.2	14.18 360.2	2.120 53.80	4.380 111.2	0.500 12.70	16.75 425.4	20	1.250 31.70	20.25 514.3	70.9		
16	16.00 406.4	25.50 647.7	16.19 411.2	2.250 57.15	4.750 120.6	0.500 12.70	19.00 482.6	20	1.380 35.00	22.50 571.5	89.5		
18	18.00 457.2	28.00 711.2	18.20 462.3	2.380 60.45	5.120 130.0	0.500 12.70	21.00 533.4	24	1.380 35.00	24.75 628.6	111		
20	20.00 508.0	30.50 774.7	20.25 514.4	2.500 63.50	5.500 139.7	0.500 12.70	23.12 587.2	24	1.380 35.0	27.00 685.8	137		
24	24.00 609.6	36.00 914.4	24.25 616.0	2.750 69.8	6.000 152.4	0.500 12.70	27.62 701.5	24	1.620 41.10	32.00 812.8	204		

Notes

- Weights are based on manufacturer's data and are approximate.

ZIZI ENGINEERING CO LTD

Lap Joint Flanges - ANSI B16.5



Class 400 ID

Nominal Pipe Size	Pipe	Flange Data				Lap	Hub	Drilling Data			Weight
		A	B	C	D	R	F	H	I	J	
	Outside Diameter	Overall Diameter	Inside Diameter	Flange Thickness min	Overall Length	Lap Radius	Hub Diameter	Number of Holes	Bolt Hole Diameter	Diameter of Circle of Holes	kg/ piece
in mm	in mm	in mm	in mm	in mm	in mm	in mm	in mm		in mm	in mm	
1/2	0.840	3.750	0.900	0.560	0.880	0.120	1.500	4	0.620	2.620	0.72
	21.30	95.30	22.90	14.20	22.40	3.000	38.10		15.70	66.55	
3/4	1.050	4.620	1.110	0.620	1.000	0.120	1.880	4	0.750	3.250	1.25
	26.70	117.3	28.20	15.70	25.40	3.000	47.80		19.10	82.60	
1	1.315	4.880	1.380	0.690	1.060	0.120	2.120	4	0.750	3.500	1.50
	33.40	124.0	35.10	17.50	26.90	3.000	53.80		19.10	88.90	
1 1/4	1.660	5.250	1.720	0.810	1.120	0.190	2.500	4	0.750	3.880	2.00
	42.20	133.4	43.70	20.60	28.40	4.800	63.50		19.10	98.60	
1 1/2	1.900	6.120	1.970	0.880	1.250	0.250	2.750	4	0.880	4.500	2.92
	48.30	155.4	50.00	22.40	31.75	6.400	69.85		22.40	114.3	
2	2.375	6.500	2.460	1.000	1.440	0.310	3.310	8	0.750	5.000	3.55
	60.30	165.1	62.50	25.40	36.60	7.900	84.10		19.10	127.0	
2 1/2	2.875	7.500	2.970	1.120	1.620	0.310	3.940	8	0.880	5.880	5.23
	73.00	190.5	75.40	28.40	41.10	7.900	100.1		22.40	149.4	
3	3.500	8.250	3.600	1.125	1.810	0.380	4.620	8	0.880	6.620	6.95
	88.90	209.6	91.40	31.75	46.00	9.700	117.3		22.40	168.1	
3 1/2	4.000	9.000	4.100	1.380	1.940	0.380	5.250	8	1.000	7.250	8.78
	101.6	228.6	104.1	35.10	49.30	9.700	133.4		25.40	184.2	
4	4.500	10.00	4.600	1.380	2.000	0.440	5.750	8	1.000	7.880	10.9
	114.3	254.0	116.8	35.10	50.80	11.20	146.1		25.40	200.2	
5	5.563	11.00	5.690	1.500	2.120	0.440	7.000	8	1.000	9.250	13.7
	141.3	279.4	114.5	38.10	53.80	11.20	177.8		25.40	235.0	
6	6.625	12.50	6.750	1.620	2.250	0.500	8.120	12	1.000	10.62	18.0
	168.3	317.5	171.5	41.10	57.15	12.70	206.2		25.40	269.7	
8	8.625	15.00	8.750	1.880	2.690	0.500	10.25	12	1.120	13.00	28.3
	219.1	381.0	222.3	47.80	68.30	12.70	260.4		28.40	330.2	
10	10.75	17.50	10.92	2.120	4.000	0.500	12.62	16	1.250	15.25	38.8
	273.0	444.5	277.4	53.80	101.6	12.70	320.5		31.75	387.4	
12	12.75	20.50	12.92	2.250	4.250	0.500	14.75	16	1.380	17.75	56.6
	323.8	520.7	328.2	57.15	108.0	12.70	374.7		35.10	450.9	
14	14.00	23.00	14.18	2.380	4.620	0.500	16.75	20	1.380	20.25	78.6
	355.6	584.2	360.2	60.45	117.3	12.70	425.5		35.10	514.4	
16	16.00	25.50	16.19	2.500	5.000	0.500	19.00	20	1.500	22.50	100
	406.4	647.7	411.2	63.50	127.0	12.70	482.6		38.10	571.5	
18	18.00	28.00	18.20	2.620	5.380	0.500	21.00	24	1.500	24.75	122
	457.2	711.2	462.3	66.55	136.7	12.70	533.4		38.10	628.7	
20	20.00	30.50	20.25	2.750	5.750	0.500	23.12	24	1.620	27.00	145
	508.0	774.7	514.4	69.85	146.1	12.70	587.2		41.10	685.8	
24	24.00	36.00	24.25	3.000	6.250	0.500	27.62	24	1.880	32.00	217
	609.6	914.4	616.0	76.20	158.8	12.70	701.5		47.80	812.8	

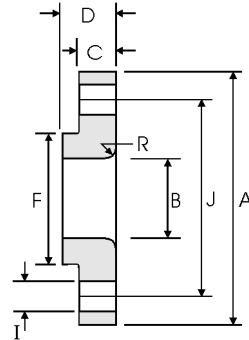
Notes

- Weights are based on manufacturer's data and are approximate.

ZIZI ENGINEERING CO LTD



Lap Joint Flanges - ANSI B16.5



Class 600 lb

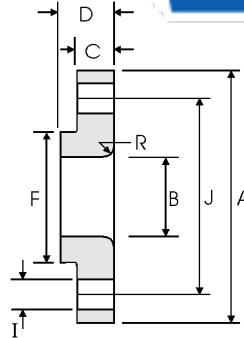
Nominal Pipe Size	Pipe	Flange Data					Lap	Hub	Drilling Data			Weight
		A	B	C	D	R	F	H	I	J		
	Outside Diameter	Overall Diameter	Inside Diameter	Flange Thickness min	Overall Length	Lap Radius	Hub Diameter	Number of Holes	Bolt Hole Diameter	Diameter of Circle of Holes	kg/ piece	
in mm	in mm	in mm	in mm	in mm	in mm	in mm	in mm		in mm			
1/2	0.840	3.750	0.900	0.560	0.880	0.120	1.500	4	0.620	2.620	0.72	
	21.30	95.30	22.90	14.20	22.40	3.000	38.10		15.70	66.55		
3/4	1.050	4.620	1.110	0.620	1.000	0.120	1.880	4	0.750	3.250	1.25	
	26.70	117.3	28.20	15.70	25.40	3.000	47.80		19.10	82.60		
1	1.315	4.880	1.380	0.690	1.060	0.120	2.120	4	0.750	3.500	1.50	
	33.40	124.0	35.10	17.50	26.90	3.000	53.80		19.10	88.90		
1 1/4	1.660	5.250	1.720	0.810	1.120	0.190	2.500	4	0.750	3.880	2.00	
	42.20	133.4	43.70	20.60	28.40	4.800	63.50		19.10	98.60		
1 1/2	1.900	6.120	1.970	0.880	1.250	0.250	2.750	4	0.880	4.500	2.92	
	48.30	155.4	50.00	22.40	31.75	6.400	69.85		22.40	114.3		
2	2.375	6.500	2.460	1.000	1.440	0.310	3.310	8	0.750	5.000	3.55	
	60.30	165.1	62.50	25.40	36.60	7.900	84.10		19.10	127.0		
2 1/2	2.875	7.500	2.970	1.120	1.620	0.310	3.940	8	0.880	5.880	5.23	
	73.00	190.5	75.40	28.40	41.10	7.900	100.1		22.40	149.4		
3	3.500	8.250	3.600	1.125	1.810	0.380	4.620	8	0.880	6.620	6.95	
	88.90	209.6	91.40	31.75	46.00	9.700	117.3		22.40	168.1		
3 1/2	4.000	9.000	4.100	1.380	1.940	0.380	5.250	8	1.000	7.250	8.78	
	101.6	228.6	104.1	35.10	49.30	9.700	133.4		25.40	184.2		
4	4.500	10.75	4.600	1.500	2.120	0.440	6.000	8	1.000	8.500	14.4	
	114.3	273.1	116.8	38.10	53.80	11.20	152.4		25.40	215.9		
5	5.563	13.00	5.690	1.750	2.380	0.440	7.440	8	1.120	10.50	24.3	
	141.3	330.2	114.5	44.50	60.45	11.20	189.0		28.40	266.7		
6	6.625	14.00	6.750	1.880	2.620	0.500	8.750	12	1.120	11.50	28.5	
	168.3	355.6	171.5	47.80	66.55	12.70	222.3		28.40	292.1		
8	8.625	16.50	8.750	2.190	3.000	0.500	10.75	12	1.250	13.75	43.1	
	219.1	419.1	222.3	55.60	76.20	12.70	273.1		31.75	349.3		
10	10.75	20.00	10.92	2.500	4.380	0.500	13.50	16	1.380	17.00	70.5	
	273.0	508.0	277.4	63.50	111.3	12.70	342.9		35.10	431.8		
12	12.75	22.00	12.92	2.620	4.620	0.500	15.75	20	1.380	19.25	86.1	
	323.8	558.8	328.2	66.55	117.3	12.70	400.1		35.10	489.0		
14	14.00	23.75	14.18	2.750	5.000	0.500	17.00	20	1.500	20.75	100	
	355.6	603.3	360.2	69.85	127.0	12.70	431.8		38.10	527.1		
16	16.00	27.00	16.19	3.000	5.500	0.500	19.50	20	1.620	23.75	145	
	406.4	685.8	411.2	76.20	139.7	12.70	495.3		41.10	603.3		
18	18.00	29.25	18.20	3.250	6.000	0.500	21.50	20	1.750	25.75	177	
	457.2	743.0	462.3	82.60	152.4	12.70	546.1		44.50	654.1		
20	20.00	32.00	20.25	3.500	6.500	0.500	24.00	24	1.750	28.50	225	
	508.0	812.8	514.4	88.90	165.1	12.70	609.6		44.50	723.9		
24	24.00	37.00	24.25	4.000	7.250	0.500	28.25	24	2.000	33.00	318	
	609.6	939.8	616.0	101.6	184.2	12.70	717.6		50.80	838.2		

Notes

- Weights are based on manufacturer's data and are approximate.

ZIZI ENGINEERING CO LTD

Lap Joint Flanges - ANSI B16.5



Class 900 lb

Nominal Pipe Size	Pipe	Flange Data					Lap	Hub	Drilling Data			Weight
		A	B	C	D	R	F	H	I	J		
	Outside Diameter	Overall Diameter	Inside Diameter	Flange Thickness min	Overall Length	Lap Radius	Hub Diameter	Number of Holes	Bolt Hole Diameter	Diameter of Circle of Holes	kg/ piece	
	in mm	in mm	in mm	in mm	in mm	in mm	in mm		in mm	in mm		
1/2	0.840	4.750	0.900	0.880	1.250	0.120	1.500	4	0.880	3.250	1.71	
	21.30	120.6	22.90	22.30	31.70	3.000	38.10		22.30	82.50		
3/4	1.050	5.120	1.110	1.000	1.380	0.120	1.750	4	0.880	3.500	2.30	
	26.70	130.0	28.20	25.40	35.00	3.000	44.40		22.30	88.90		
1	1.315	5.880	1.380	1.120	1.620	0.120	2.060	4	1.000	4.000	3.40	
	33.40	149.3	35.10	28.40	41.10	3.000	52.30		25.40	101.6		
1 1/4	1.660	6.250	1.720	1.120	1.620	0.190	2.500	4	1.000	4.380	3.85	
	42.20	158.7	43.70	28.40	41.10	4.800	63.50		25.40	111.2		
1 1/2	1.900	7.000	1.970	1.250	1.750	0.250	2.750	4	1.120	4.880	5.28	
	48.30	177.8	50.00	31.70	44.40	6.400	69.85		28.40	123.9		
2	2.375	8.500	2.460	1.500	2.250	0.310	4.120	8	1.000	6.500	9.78	
	60.30	215.9	62.50	38.10	57.15	7.900	104.6		25.40	165.1		
2 1/2	2.875	9.620	2.970	1.620	2.500	0.310	4.880	8	1.120	7.500	13.6	
	73.00	244.3	75.40	41.10	63.50	7.900	123.9		28.40	190.5		
3	3.500	9.500	3.600	1.500	2.120	0.380	5.000	8	1.000	7.500	11.3	
	88.90	241.3	91.40	38.10	53.80	9.700	127.0		25.40	190.5		
4	4.500	11.50	4.600	1.750	2.750	0.440	6.250	8	1.250	9.250	19.2	
	114.3	292.1	116.8	44.40	69.85	11.20	158.7		31.70	234.9		
5	5.563	13.75	5.690	2.000	3.120	0.440	7.500	8	1.380	11.00	31.20	
	141.3	349.2	114.5	50.80	79.25	11.20	190.5		35.00	279.4		
6	6.625	15.00	6.750	2.190	3.380	0.500	9.250	12	1.250	12.50	40.50	
	168.3	381.0	171.5	55.60	85.80	12.70	234.9		31.70	317.5		
8	8.625	18.50	8.750	2.500	4.500	0.500	11.75	12	1.500	15.50	71.5	
	219.1	469.9	222.3	63.50	114.3	12.70	298.4		38.10	393.7		
10	10.75	21.50	10.92	2.750	5.000	0.500	14.50	16	1.500	18.50	104	
	273.0	546.1	277.4	69.85	127.0	12.70	368.3		38.10	469.9		
12	12.75	24.00	12.92	3.120	5.620	0.500	16.50	20	1.500	21.00	139	
	323.8	609.6	328.2	79.25	142.7	12.70	419.1		38.10	533.4		
14	14.00	25.25	14.18	3.380	6.120	0.500	17.75	20	1.620	22.00	161	
	355.6	641.3	360.2	85.80	155.4	12.70	450.8		41.10	558.8		
16	16.00	27.75	16.19	3.500	6.500	0.500	20.00	20	1.750	24.25	194	
	406.4	704.8	411.2	88.90	165.1	12.70	508.0		44.40	615.9		
18	18.00	31.00	18.20	4.000	7.500	0.500	22.25	20	2.000	27.00	267	
	457.2	787.4	462.3	101.6	190.5	12.70	565.1		50.80	685.8		
20	20.00	33.75	20.25	4.250	8.250	0.500	24.50	20	2.120	29.50	334	
	508.0	857.2	514.4	107.9	209.5	12.70	622.3		53.80	749.3		
24	24.00	41.00	24.25	50.50	10.50	0.500	29.50	20	2.620	35.50	618	
	609.6	1041.4	616.0	139.7	266.7	12.70	749.3		66.55	901.7		

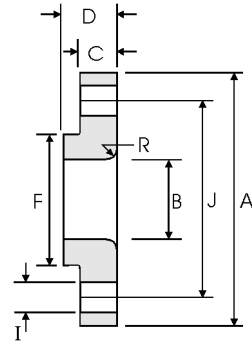
Notes

- Weights are based on manufacturer's data and are approximate.

ZIZI ENGINEERING CO LTD



Lap Joint Flanges - ANSI B16.5



Class 1500 lb

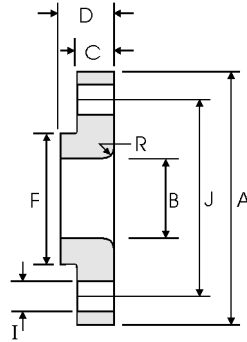
Pipe		Flange Data				Lap	Hub	Drilling Data			Weight
Nominal Pipe Size		A	B	C	D	R	F	H	I	J	
	Outside Diameter	Overall Diameter	Inside Diameter	Flange Thickness min	Overall Length	Lap Radius	Hub Diameter	Number of Holes	Bolt Hole Diameter	Diameter of Circle of Holes	kg/ piece
	in mm	in mm	in mm	in mm	in mm	in mm	in mm		in mm	in mm	
1/2	0.840 21.30	4.750 120.6	0.900 22.90	0.880 22.30	1.250 31.70	0.120 3.000	1.500 38.10	4	0.880 22.30	3.250 82.50	1.71
3/4	1.050 26.70	5.120 130.0	1.110 28.20	1.000 25.40	1.380 35.00	0.120 3.000	1.750 44.40	4	0.880 22.30	3.500 88.90	2.30
1	1.315 33.40	5.880 149.3	1.380 35.10	1.120 28.40	1.620 41.10	0.120 3.000	2.060 52.30	4	1.000 25.40	4.000 101.6	3.40
1 1/4	1.660 42.20	6.250 158.7	1.720 43.70	1.120 28.40	1.620 41.10	0.190 4.800	2.500 63.50	4	1.000 25.40	4.380 111.2	3.85
1 1/2	1.900 48.30	7.000 177.8	1.970 50.00	1.250 31.70	1.750 44.40	0.250 6.400	2.750 69.85	4	1.120 28.40	4.880 123.9	5.28
2	2.375 60.30	8.500 215.9	2.460 62.50	1.500 38.10	2.250 57.15	0.310 7.900	4.120 104.6	8	1.000 25.40	6.500 165.1	9.78
2 1/2	2.875 73.00	9.620 244.3	2.970 75.40	1.620 41.10	2.500 63.50	0.310 7.900	4.880 123.9	8	1.120 28.40	7.500 190.5	13.6
3	3.500 88.90	10.50 266.7	3.600 91.40	1.880 47.70	2.880 73.15	0.380 9.700	5.250 133.3	8	1.250 31.70	8.000 203.2	17.8
4	4.500 114.3	12.25 311.1	4.600 116.8	2.120 53.80	3.560 90.40	0.440 11.20	6.380 162.0	8	1.380 35.00	9.500 241.3	27.5
5	5.563 141.3	14.75 374.6	5.690 144.5	2.880 73.15	4.120 104.6	0.440 11.20	7.750 196.8	8	1.620 41.10	11.50 292.1	51.5
6	6.625 168.3	15.50 399.7	6.750 171.5	3.250 82.50	4.690 119.1	0.500 12.70	9.000 228.6	12	1.500 38.10	12.50 317.5	62.0
8	8.625 219.1	19.00 482.6	8.750 222.3	3.620 91.90	5.620 142.7	0.500 12.70	11.50 292.1	12	1.750 44.40	15.50 393.7	105
10	10.75 273.0	23.00 584.2	10.92 277.4	4.250 107.9	7.000 177.8	0.500 12.70	14.50 368.3	12	2.000 50.80	19.00 482.6	179
12	12.75 323.8	26.50 673.1	12.92 328.2	4.880 123.9	8.620 218.9	0.500 12.70	17.75 450.8	16	2.120 53.80	22.50 571.5	269
14	14.00 355.6	29.50 749.3	14.18 360.2	5.250 133.3	9.500 241.3	0.500 12.70	19.50 495.3	16	2.380 60.45	25.00 635.0	365
16	16.00 406.4	32.50 825.5	16.19 411.2	5.750 146.0	10.25 260.3	0.500 12.70	21.75 552.4	16	2.620 66.55	27.75 704.8	459
18	18.00 457.2	36.00 914.4	18.20 462.3	6.380 162.0	10.88 276.3	0.500 12.70	23.50 596.9	16	2.880 73.15	30.50 774.7	598
20	20.00 508.0	38.75 984.2	20.25 514.4	7.000 177.8	11.50 292.1	0.500 12.70	25.25 641.3	16	3.120 79.25	32.75 831.8	712
24	24.00 609.6	46.00 1168.4	24.25 616.0	8.000 203.2	13.00 330.2	0.500 12.70	30.00 762.0	16	3.620 91.90	39.00 990.6	1090

Notes

- Weights are based on manufacturer's data and are approximate.

ZIZI ENGINEERING CO LTD

Lap Joint Flanges - ANSI B16.5



Class 2500 lb

Nominal Pipe Size	Pipe	Flange Data				Lap	Hub	Drilling Data			Weight
		A	B	C	D	R	F	H	I	J	
	Outside Diameter	Overall Diameter	Inside Diameter	Flange Thickness min	Overall Length	Lap Radius	Hub Diameter	Number of Holes	Bolt Hole Diameter	Diameter of Circle of Holes	kg/ piece
	in mm	in mm	in mm	in mm	in mm	in mm	in mm		in mm	in mm	
1/2	0.840	5.255	0.900	1.190	1.560	0.120	1.690	4	0.880	3.500	2.92
	21.30	133.4	22.90	30.20	39.60	3.000	42.90		22.40	88.90	
3/4	1.050	5.500	1.110	1.250	1.690	0.120	2.000	4	0.880	3.750	3.40
	26.70	139.7	28.20	31.75	42.90	3.000	50.80		22.40	95.30	
1	1.315	6.250	1.380	1.380	1.880	0.120	2.250	4	1.000	4.250	4.77
	33.40	158.8	35.10	35.10	47.80	3.000	57.15		25.40	108.0	
1 1/4	1.660	7.250	1.720	1.500	2.060	0.190	2.880	4	1.120	5.120	7.08
	42.20	184.2	43.70	38.10	52.30	4.800	73.15		28.40	130.0	
1 1/2	1.900	8.000	1.970	1.750	2.380	0.250	3.120	4	1.250	5.750	9.93
	48.30	203.2	50.00	44.50	60.45	6.400	79.25		31.75	146.1	
2	2.375	9.250	2.460	2.000	2.750	0.310	3.750	8	1.120	6.750	14.7
	60.30	235.0	62.50	50.80	69.85	7.900	95.30		28.40	171.5	
2 1/2	2.875	10.50	2.970	2.250	3.120	0.310	4.500	8	1.250	7.750	21.3
	73.00	266.7	75.40	57.15	79.25	7.900	114.3		31.75	196.9	
3	3.500	12.00	3.600	2.620	3.620	0.380	5.250	8	1.380	9.000	32.3
	88.90	304.8	91.40	66.55	91.90	9.700	133.4		35.10	228.6	
4	4.500	14.00	4.600	3.000	4.250	0.440	6.500	8	1.620	10.75	52.5
	114.3	355.6	116.8	76.20	108.0	11.20	165.1		41.10	273.1	
5	5.563	16.50	5.690	3.620	5.120	0.440	8.000	8	1.880	12.75	82.6
	141.3	419.1	114.5	91.90	130.0	11.20	203.2		47.80	323.9	
6	6.625	19.00	6.750	4.250	6.000	0.500	9.250	8	2.120	14.50	127
	168.3	482.6	171.5	108.0	152.4	12.70	235.0		53.80	368.3	
8	8.625	21.75	8.750	5.000	7.000	0.500	12.00	12	2.120	17.25	186
	219.1	552.5	222.3	127.0	177.8	12.70	304.8		53.80	438.2	
10	10.75	26.50	10.92	6.500	9.000	0.500	14.75	12	2.620	21.25	352
	273.0	673.1	277.4	165.1	228.6	12.70	374.7		66.55	539.8	
12	12.75	30.00	12.92	7.250	10.00	0.500	17.38	12	2.880	24.38	501
	323.8	762.0	328.2	184.2	254.0	12.70	441.5		73.15	619.3	

Notes

- Weights are based on manufacturer's data and are approximate.